

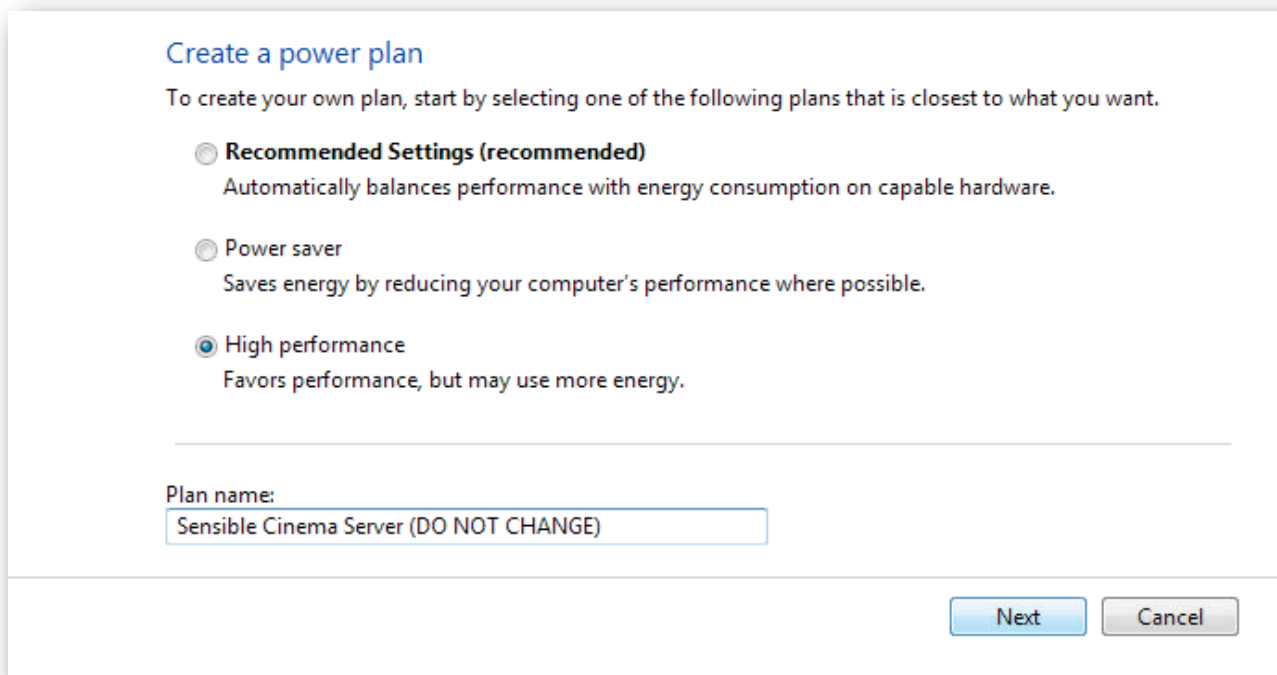
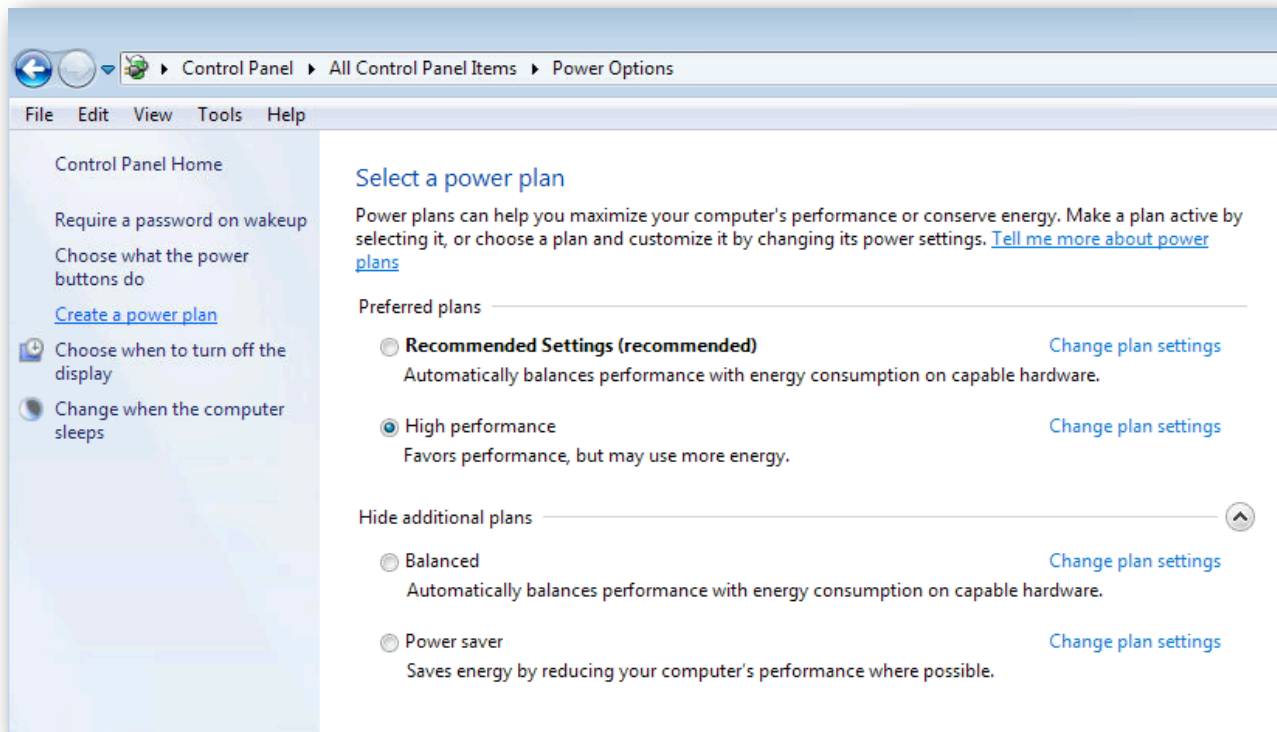
Sensible Cinema Server Settings

Windows Server 2008, Windows 7 and Windows 8 Systems

In order for Sensible Cinema Box Office for Windows terminal clients to successfully connect and interact with your server, certain power saving options on the server must be disabled.


POWER SETTINGS


In the **Control Panel**, select **Power Options**. First, click **Create a Power Plan** and give it a name. Base it on the existing **High Performance** plan.



Change settings for the plan: Sensible Cinema Server (DO NOT CHANGE)

Choose the sleep and display settings that you want your computer to use.

 Turn off the display: 15 minutes

 Put the computer to sleep: Never

Create

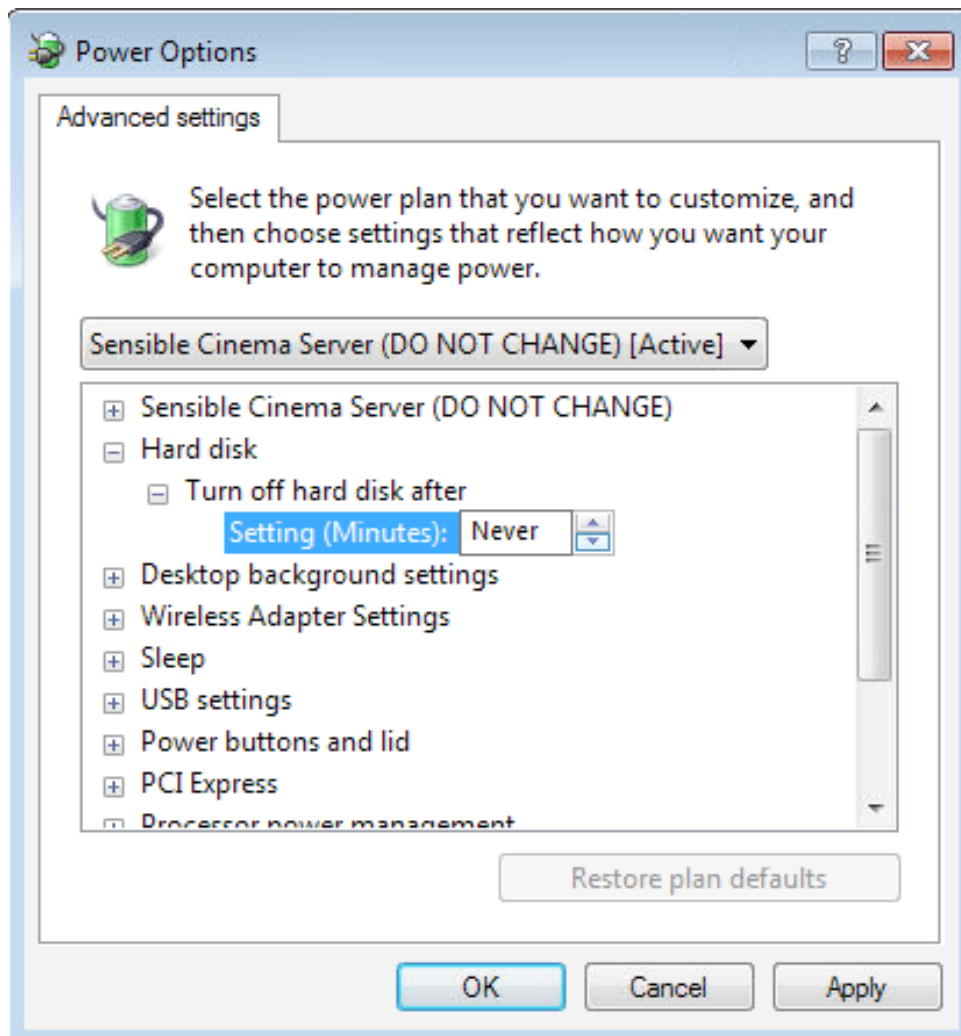
Cancel

Next, click **Change Plan Settings** to make sure the remaining details are correct.

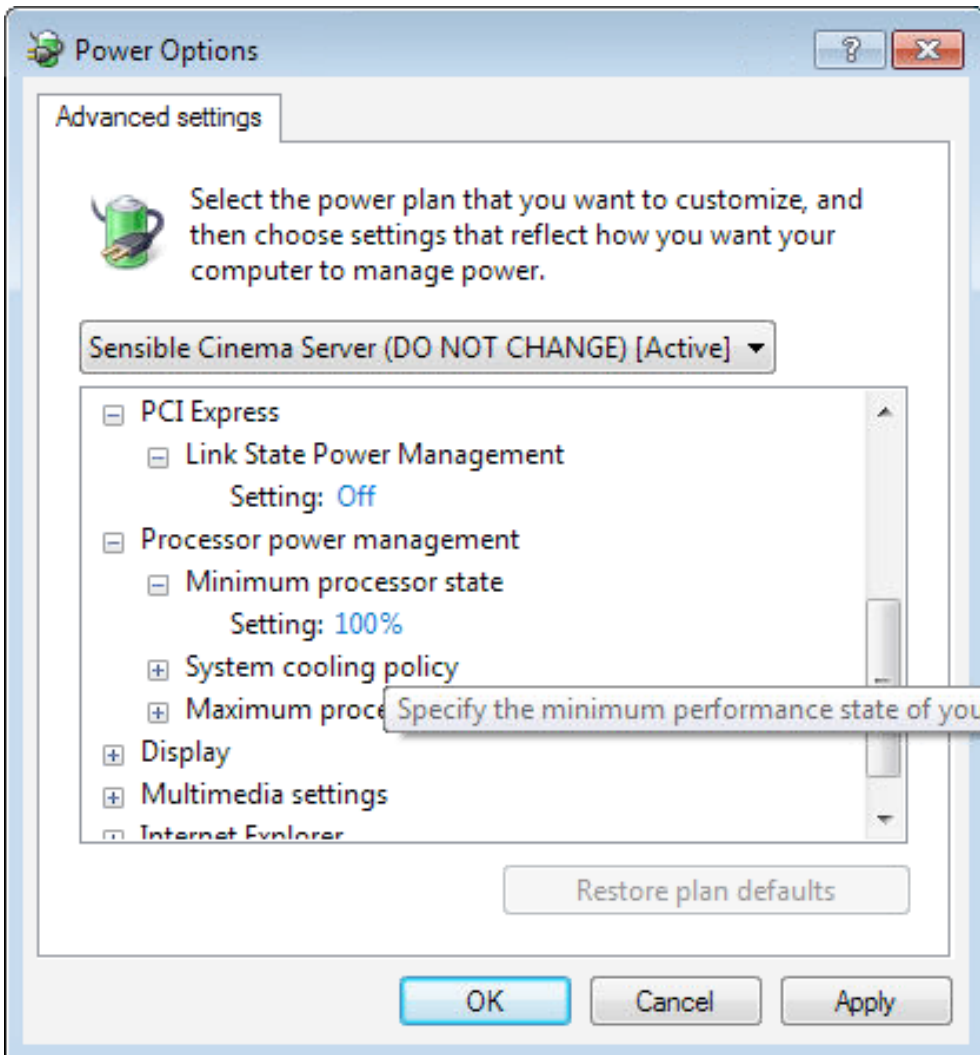
Sensible Cinema Server (DO NOT CHANGE)

[Change plan settings](#)

Next, click **Hard Disk** and change the **Turn off disk after** setting minutes from 20 minutes to Never.

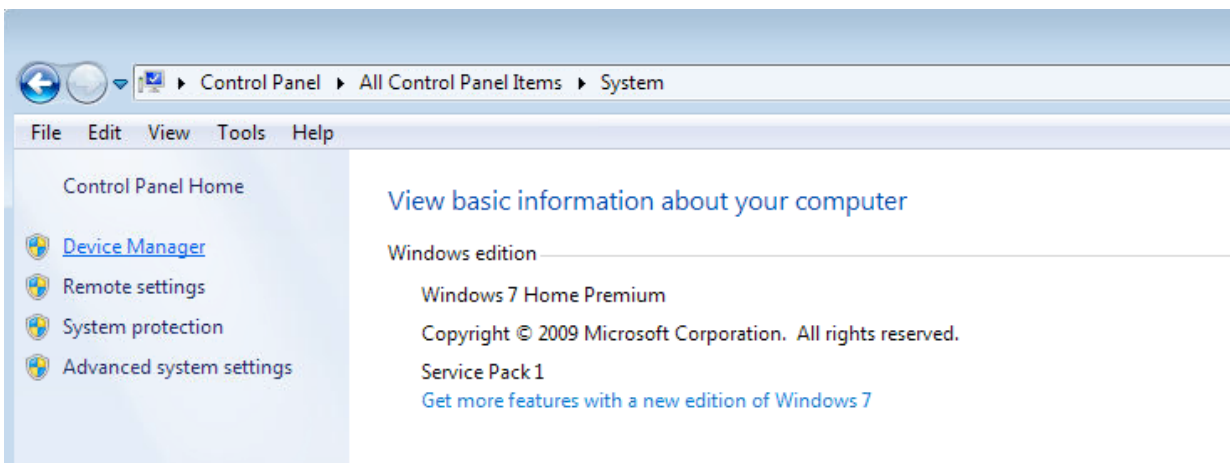


Next, click **PCI Express** and verify the setting is **Off**. Also, click **Processor Power Management** and ensure the **Minimum Processor State** is 100%.

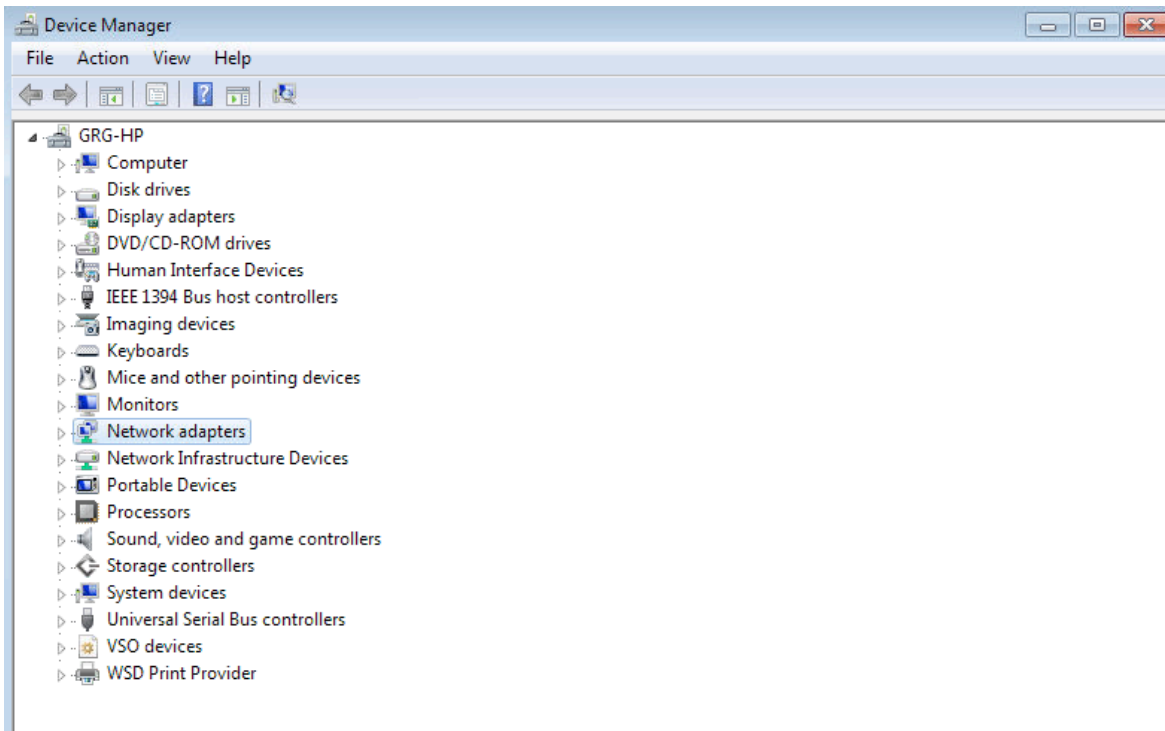


DEVICE MANAGER

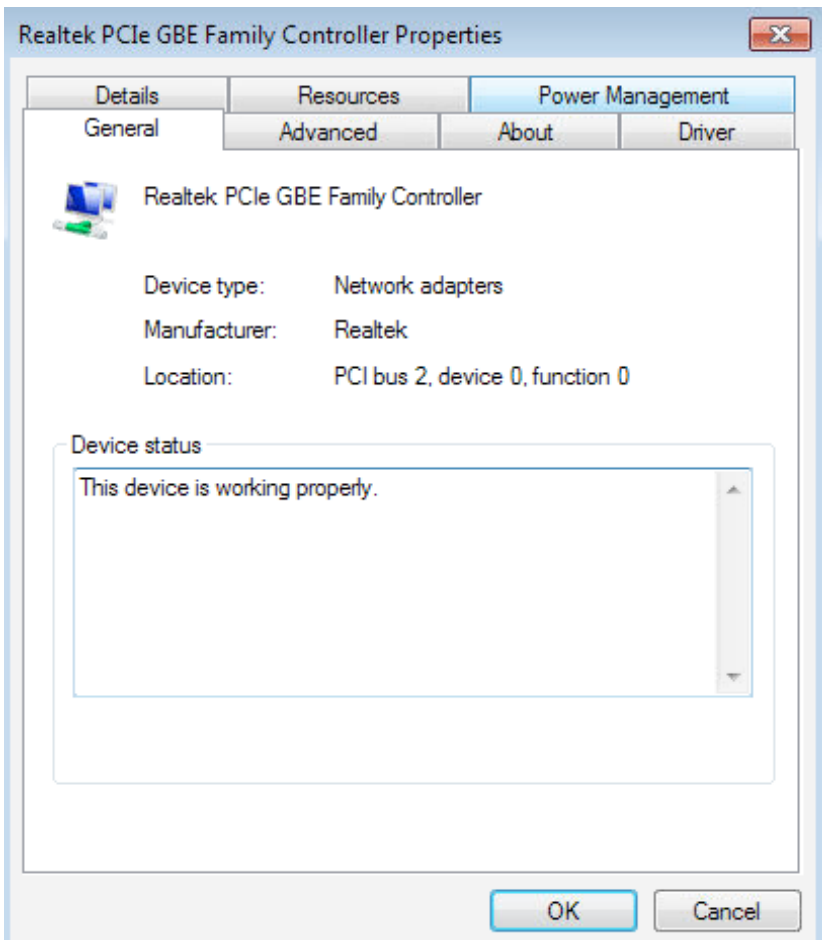
In the Control Panel open the **System** dialog and choose **Device Manager** from the side menu.



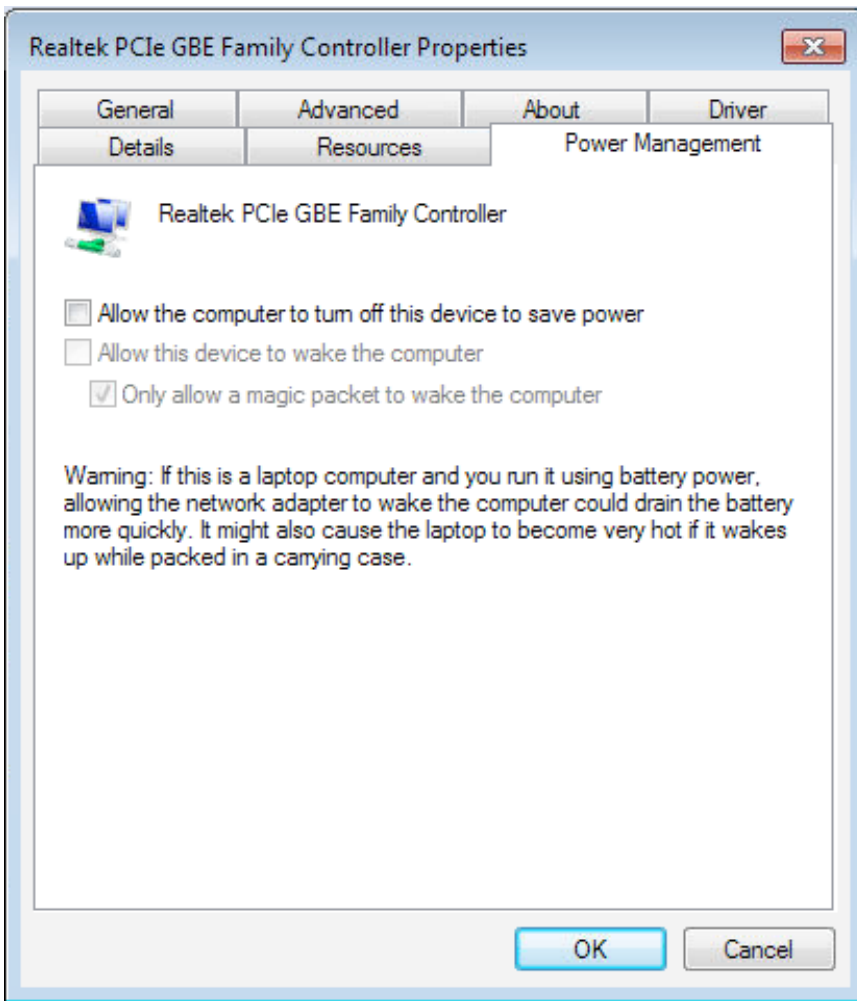
Select **Networking Adapters** and find the wired network adapter.



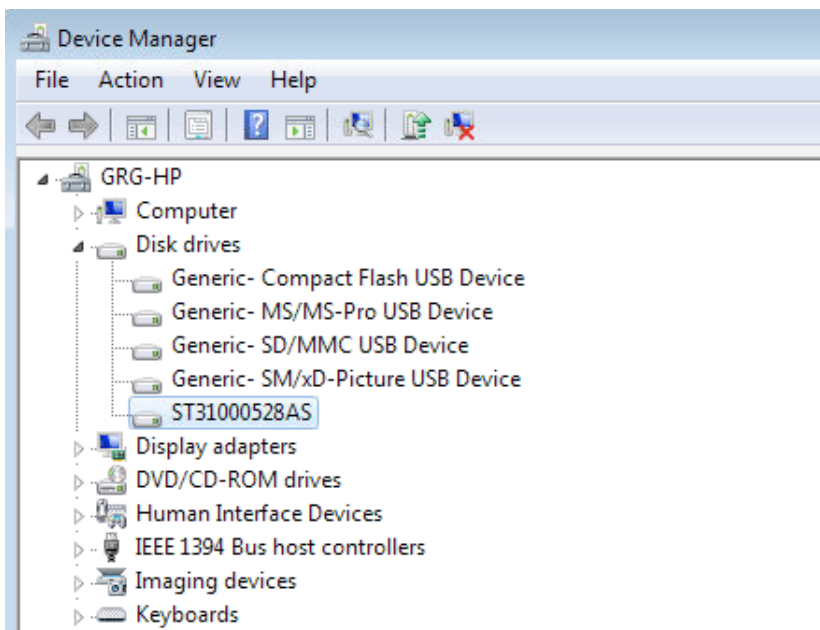
Choose the **Power Management** tab.



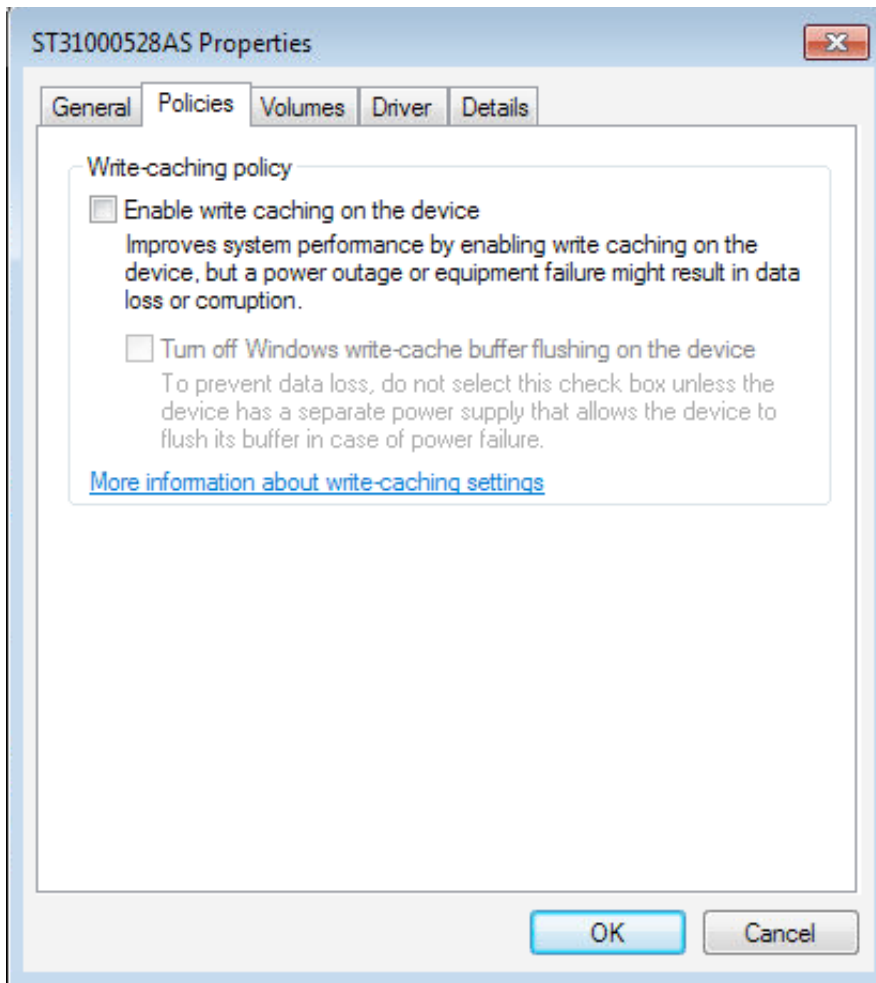
Uncheck the checkboxes that would allow the computer to turn off the device to save power.



Next, locate the hard disk to be used by the server for the POS and find its **Policies** tab.

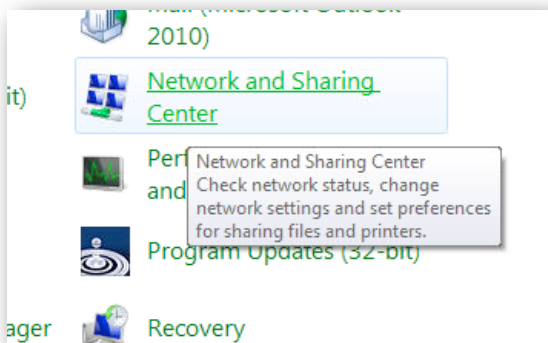


Uncheck the checkbox enabling write caching on the device.

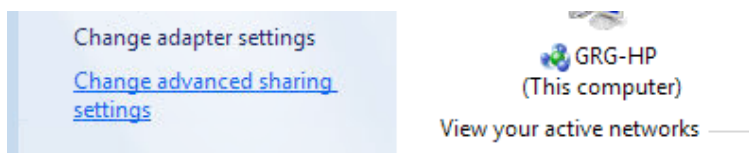


NETWORK SETTINGS

In the Control Panel, select **Network and Sharing Center**.



Select **Change advanced sharing settings** from the side menu



Make sure **Network Discovery** and **File and Printer Sharing** are Turned On

Change sharing options for different network profiles

Windows creates a separate network profile for each network you use. You can choose specific options for each profile.

Home or Work (current profile)



Network discovery

When network discovery is on, this computer can see other network computers and devices and is visible to other network computers. [What is network discovery?](#)

- Turn on network discovery
- Turn off network discovery

File and printer sharing

When file and printer sharing is on, files and printers that you have shared from this computer can be accessed by people on the network.

- Turn on file and printer sharing
- Turn off file and printer sharing

Turn off **Password Protected Sharing** unless you intend to set passwords at every workstation to connect to the shared data.

File sharing connections

Windows 7 uses 128-bit encryption to help protect file sharing connections. Some devices don't support 128-bit encryption and must use 40- or 56-bit encryption.

- Use 128-bit encryption to help protect file sharing connections (recommended)
- Enable file sharing for devices that use 40- or 56-bit encryption

Password protected sharing

When password protected sharing is on, only people who have a user account and password on this computer can access shared files, printers attached to this computer, and the Public folders. To give other people access, you must turn off password protected sharing.

- Turn on password protected sharing
- Turn off password protected sharing

Changing these settings above may require the user to log off Windows and back on again.

USER ACCOUNT CONTROL

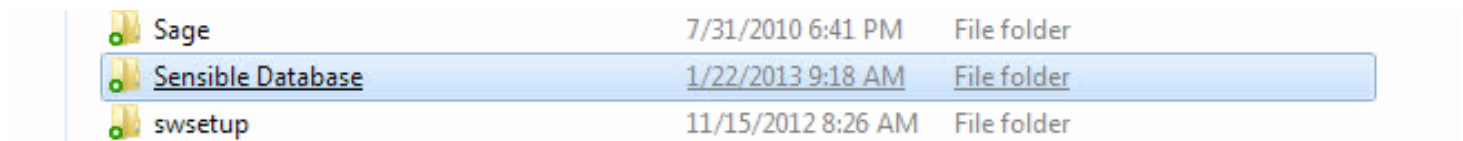
The User Account Control may be left on if desired, but will subject the user to a lot of warnings and prompts he must respond to while using the computer. To turn off all of these prompts, open **User Accounts** in the Control Panel, locate **Change User Account Control Settings** and lower the slider to **Never Notify**. In some cases, logging off Windows and back on may be required.

FIREWALL AND ANTIVIRUS

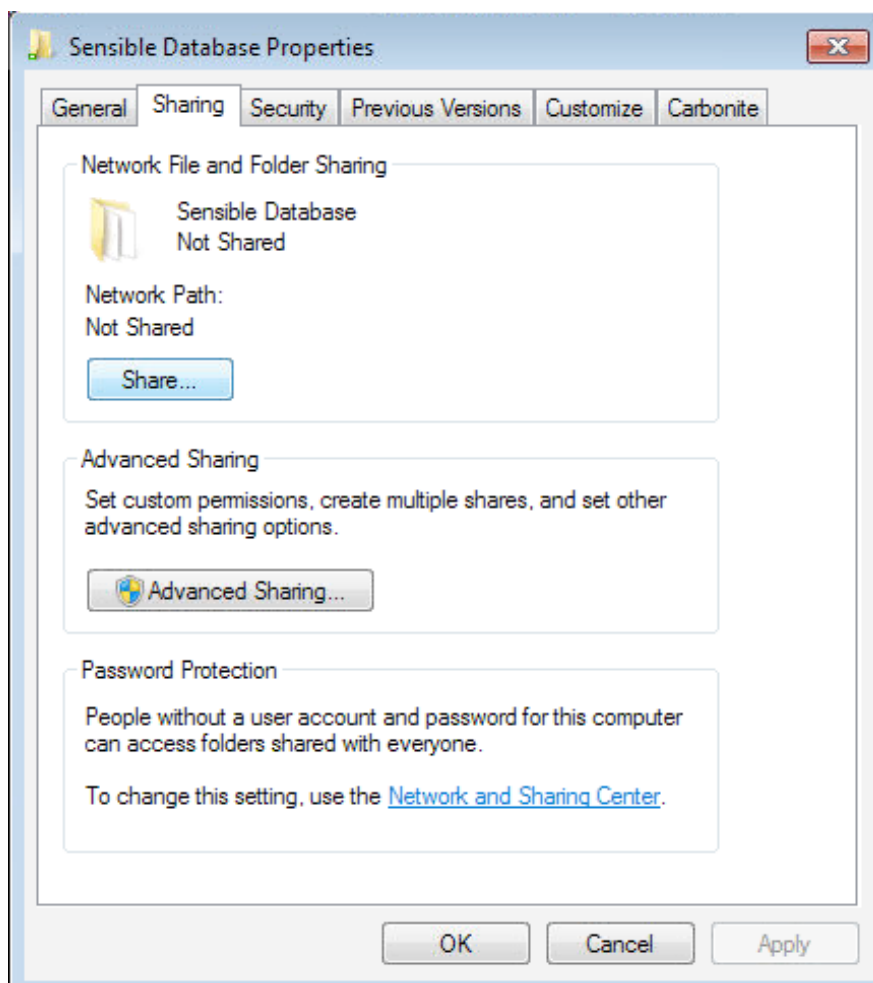
Using the free **Microsoft Security Essentials** software coupled with the **Windows Firewall** is the standard configuration we recommend. More experience is required when running one of the many paid antivirus and firewall combinations. These programs may block access to the database from the workstations rendering Sensible Cinema unusable. It is possible that Sensible Cinema may not be able to support these other programs. The Microsoft Security Essentials application is available in the security section at **microsoft.com**.

SHARING THE SENSIBLE DATABASE

After installing the Sensible Cinema Management Software, open **Computer** from the Start Menu and find the Local Disk C:. Click and find the **Sensible Database** folder.



Right-Click and choose **Properties** then choose **Sharing** tab and press the **Share** button.



Select those with whom the Sensible Database will be shared.

Choose people to share with

Type a name and then click Add, or click the arrow to find someone.

	▼	Add
Name	Permission Level	
Rusty Gordon	Read/Write ▼	
SYSTEM	Owner	

From the drop-down list select **Everyone** and press the **Add** button.

	▼	Add
Guest		
Rusty Gordon		Level
Everyone		▼
Homegroup		
SYSTEM		Owner

Everyone	▼	Add
----------	---	-----

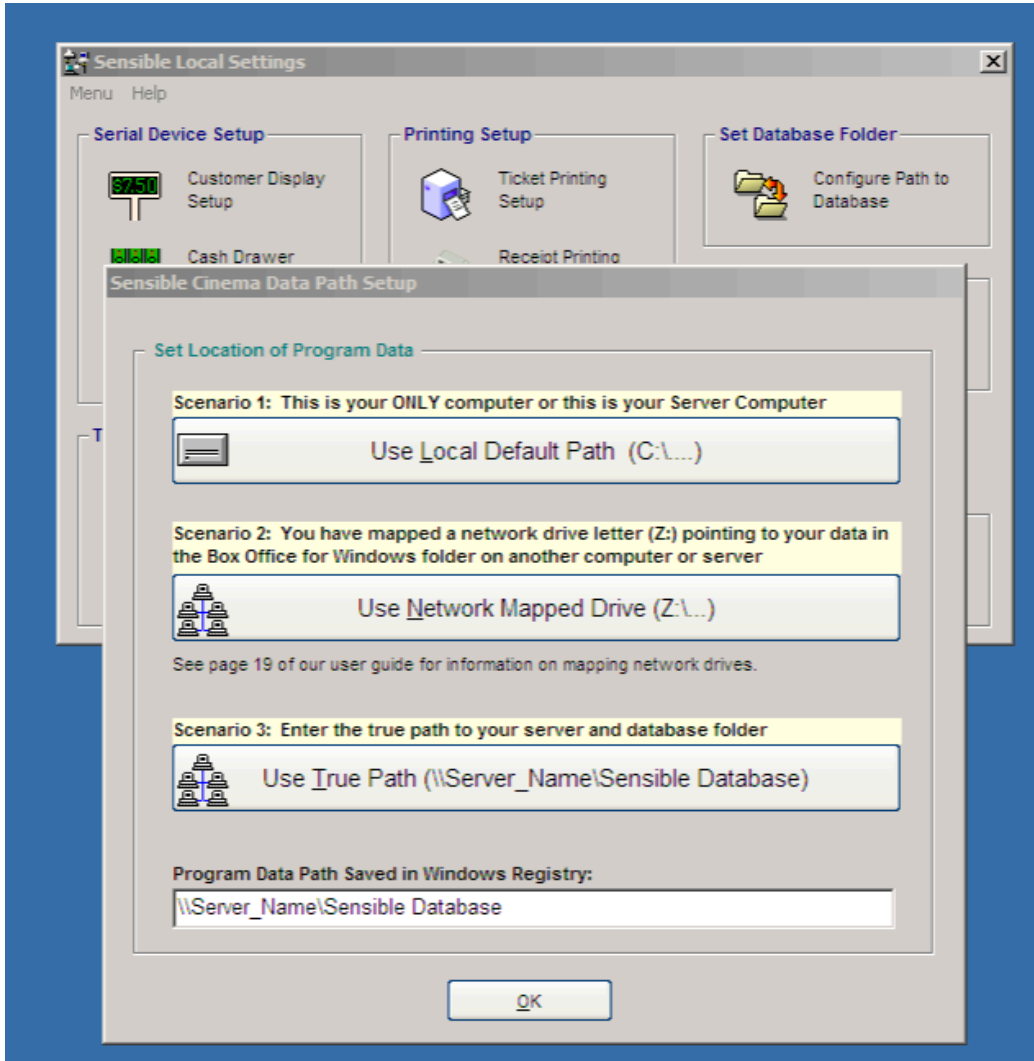
Change the permissions from **Read** to **Read/Write**. If you do not do this, the workstations will not be allowed to write new records and will be given an error #75.

Name	Permission Level	
Everyone	Read/Write ▼	Read
Rusty Gordon	Read/Write ▼	<input checked="" type="checkbox"/> Read/Write
SYSTEM	Owner	Remove

SET PATH TO DATABASE

On each Sensible Cinema workstation you will set the path to the Sensible Database folder in the **Sensible Local Settings** application.

Select **Configure Path to Database**. Click **Use True Path** and substitute *Server_Name* with the actual name of the server. Using the True Path is preferable to using a mapped network drive because Windows sometimes fails to reconnect mapped drives after disconnection events and rebooting.



Test the connection by starting up your Sensible Cinema selling terminal. You should also be able to see the shared network resource by typing the server path into a Windows Explorer address field.